

WINSHELTER (WINDows and SHading Energy, Lighting and Thermal Evaluation Routine)

Innovations and Benefits - ENEA has set up a calculation tool for the optical and thermal characterization of components and systems of the transparent envelope, which allows the following processing:

1. simplified calculation of the thermal transmittance of doors and windows, equipped with opaque closures and sun shields;
2. calculation of the properties of multiple glazing equipped with sun shields;
3. energy analysis for the classification and comparison of the performance of windows and doors.

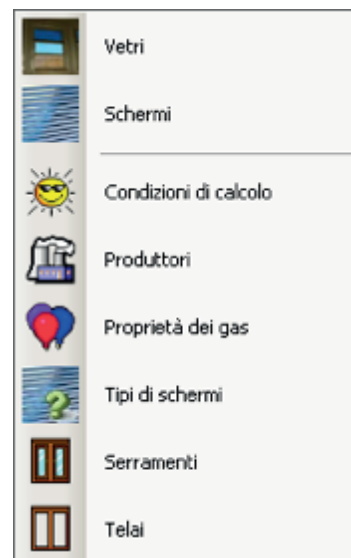
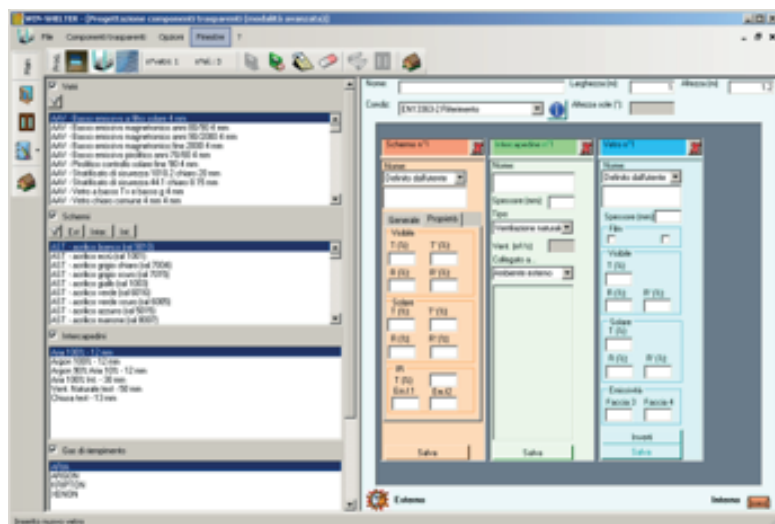
The software implements the reference standards (EN, ISO and UNI), with the necessary adjustments for applications in Italy and contains databases, developed with the support of the main trade associations.

Winshelter also allows users to develop their own databases, making it particularly suited to the needs of the industrial world.

The software is currently used by over 4,000 users.

Use - It is a tool intended for all the companies involved in the building process (window frames, doors and windows, curtain walls, sun shields), for professionals in the building and energy efficiency sectors (architects, engineers, etc.), for the academic and research world.

Applications and ongoing Activities - Collaborations: Assovetro, EdilegnoArredo, SiPVC, UNICMI.



Characteristics:
STANDARD The service is provided in standard mode