



Agenzia Nazionale per le Nuove Tecnologie,
l'Energia e lo Sviluppo Economico Sostenibile



Ministero dello Sviluppo Economico

RICERCA DI SISTEMA ELETTRICO

Updated design of the IRIS nuclear reactor seismic isolation system
and seismic analysis in beyond project design condition

S. Poggianti

Report RdS/2011/92

UPDATED DESIGN OF THE IRIS NUCLEAR REACTOR SEISMIC ISOLATION SYSTEM AND
SEISMIC ANALYSIS IN BEYOND PROJECT DESIGN CONDITION

A. Poggianti - ENEA

Settembre 2011

Report Ricerca di Sistema Elettrico

Accordo di Programma Ministero dello Sviluppo Economico – ENEA

Area: Governo, Gestione e sviluppo del sistema elettrico nazionale

Progetto: Nuovo nucleare da fissione: collaborazioni internazionali e sviluppo competenze in
materia nucleare

Responsabile Progetto: Paride Meloni, ENEA

Titolo

Updated design of the IRIS nuclear reactor seismic isolation system and seismic analysis in beyond project design condition

Descrittori

Tipologia del documento: Rapporto tecnico/Technical Report

Collocazione contrattuale: Accordo di programma ENEA-MSE: tema di ricerca “Nuovo Nucleare da Fissione”

Argomenti trattati: Reattori nucleari ad acqua, Sismica/Water Nuclear Reactors, Seismic

Sommario

This document updates the document [1]: ACS – P9LU – 001. Only the new results are included here.

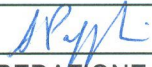
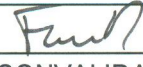
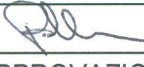
The isolation frequency was chosen in the document mentioned before and it will be maintained in order to keep the maximum horizontal displacement close to 100mm. Thus the global stiffness of the isolation system must be maintained (1570kN/mm).


This document besides presents the numerical analysis results performed in order to investigate the maximum peak ground acceleration that can be accepted by the isolation system in case of beyond project earthquake, without failures and maintaining the normal functionality.

Note

Copia n.

In carico a:

2			NOME			
			FIRMA			
1			NOME			
			FIRMA			
0	EMISSIONE	15/09/2011	NOME	A. Poggianti	M. Forni	P. Meloni
			FIRMA			
REV.	DESCRIZIONE	DATA		REDAZIONE	CONVALIDA	APPROVAZIONE

 Centro Ricerche Bologna	Sigla di identificazione	Rev.	Distrib.	Pag.	di
	NNFISS – LP2 - 063	0	R	2	16

Index

Introduction	3
Isolator characteristic	4
Position of the isolators	4
Numerical results	7
New isolator model	12
Analysis	14
References	16

Introduction

This document updates the document [1]: ACS – P9LU – 001. Only the new results are included here.

The isolation frequency was chosen in the document mentioned before and it will be maintained in order to keep the maximum horizontal displacement close to 100mm. Thus the global stiffness of the isolation system must be maintained (1570kN/mm), but a new type of isolators was selected and the analysis performed in [1] repeated.

This document, besides, presents the numerical analysis performed in order to investigate the behaviour of the isolation system when an earthquake with a PGA higher than the design value occurs.

The IRIS isolation system was designed [1] for peak ground acceleration (PGA) of 0.3g, but, as the recent earthquake that stroke the Fukushima nuclear plant demonstrated, it is possible that the design PGA should be overcome.

Scope of the second part of the document is to investigate the possibility that an earthquake with a PGA higher than 0.3g can be accepted by the isolation system without failures and maintaining the normal functionality.

During the test on the isolator designed for the IRIS isolation system [2] and [3] it was found that the shear strain design value (100% shear strain, corresponding to a 100mm displacement) can be overcome and a value three times the design one, namely 300mm, can be accepted by the isolator without any damage.

Based on this value a parametric analysis on the PGA was performed, until 300mm displacement is reached, scaling the maximum value, but keeping the same time histories used in [1].

A different isolator model was implemented to better reproduce the hysteretic cycle at a displacement level three times of the design project, because at this level of deformation the usual linear model is no more valid.

All the numerical analysis were performed using ABAQUS Finite Element Model [4]

Isolator characteristic

Following the recent development in the isolator manufacturing, it is possible to increase the isolator diameter up to 1300mm. This leads to a smaller numbers of isolators and more freedom in their lay-out.

The new isolators will be specially designed and manufactured.

After some preliminary evaluation it was decided to use two different types of isolators (diameter 1000mm and 1300mm). Different configurations were studied in order to optimize the lay-out avoiding torsion effect in the structure. The chosen new configuration includes 64 isolators diameter 1300 and 35 diameter 1000: total 99 isolators.

All the isolators will have a rubber height of 100mm this because the maximum displacement reached during the SSE must be about 100% of shear strain.

The horizontal isolator stiffness is $K_h = GA/T$ where:

G = rubber shear modulus depending on the rubber compound,

A = rubber area,

T = rubber total height

Considering the diameters, T = 100mm and G = 1.4MPa (hard rubber compound), K_h results 11.0 KN/mm for the 1000 diameter and 18.6 KN/mm for the 1300 diameter. The global horizontal stiffness is 1574 KN/mm very close to the target value.

Summarizing the isolators characteristics are:

Rubber diameter: 1000mm,

Max vertical load: to be decided ,

Max horizontal load: to be decided

Horizontal stiffness: 11.0 kN/mm,

Vertical stiffness: 7150 kN/mm (to be confirmed),

Rubber height: 100mm,

Rubber diameter: 1300mm,

Max vertical load: to be decided ,

Max horizontal load: to be decided

Horizontal stiffness: 18.6 kN/mm,

Vertical stiffness: 12000 kN/mm (to be confirmed),

Rubber height: 100mm.

Position of the isolators

The isolators must be positioned in order to have the centre of stiffness as close as possible to the centre of gravity to avoid torsion effect. Another important condition is that the vertical load must be distributed on the isolators as uniformly as possible to avoid concentrated vertical load on some of them.

After some analysis it was chosen the configuration shown in the picture 1 below. The vertical load due to the dead weight on them varies from 5200 to 12200 kN. The centre of gravity is almost coincident with the centre of stiffness.

The modal analysis performed on the structure on isolators confirms the design objective were reached.

In the table 1 and 2 below we can see that the first two modes are pure translation along X and Y axis, with a very little torsion and they have a frequency very close to 0.7 Hz. All the mass of the structure is on these two modes, thus confirming the dynamic behaviour identical to one degree of freedom oscillator. The third mode is a pure torsion mode around the centre of gravity.

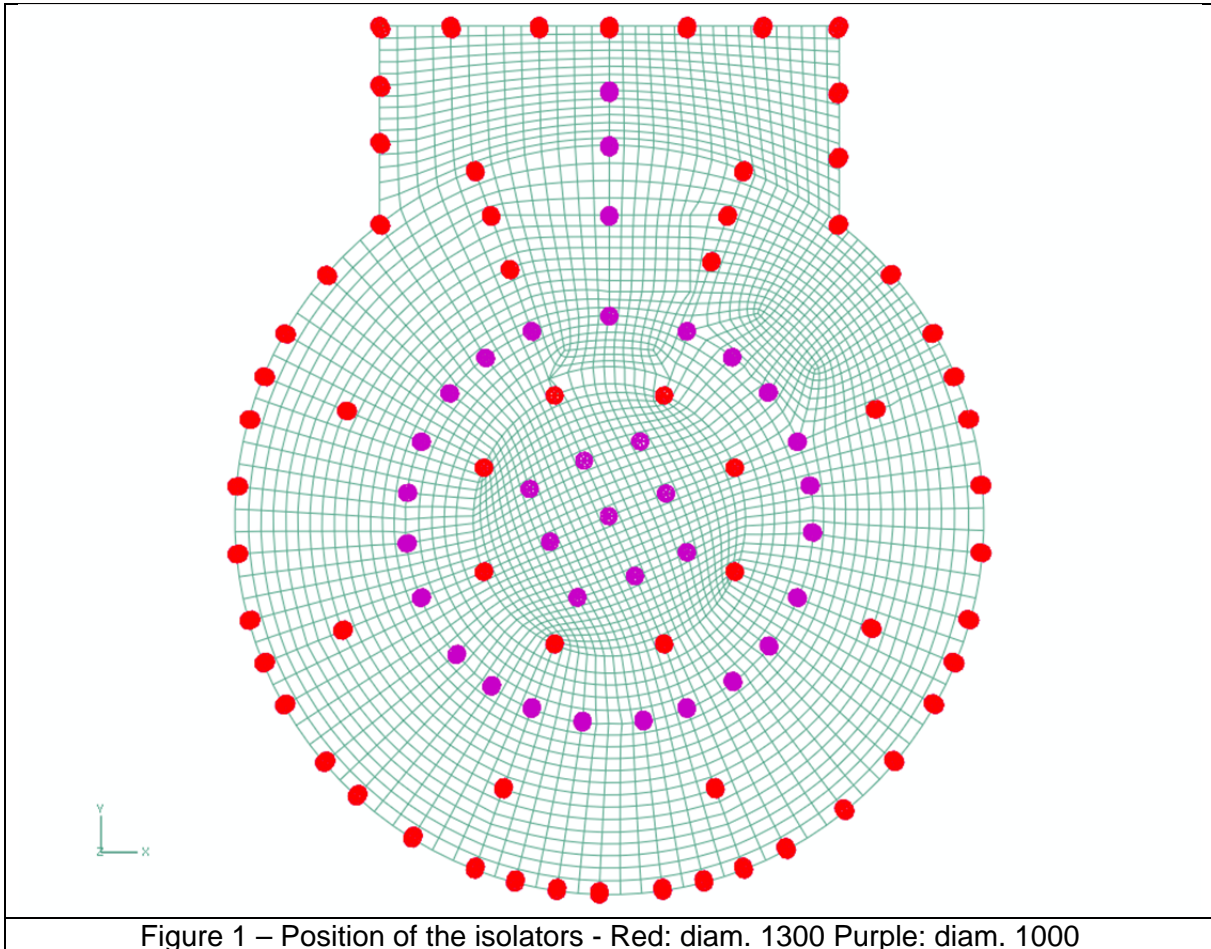
MODE	FREQUENCY	
	(RAD/TIME)	(CYCLES/TIME)
1	4.3691	0.69536
2	4.3731	0.696
3	4.8384	0.77006
4	38.823	6.1789
5	41.673	6.6324
6	57.923	9.2188
7	59.75	9.5095
8	62.933	10.016
9	64.234	10.223
10	65.793	10.471
11	66.682	10.613
12	75.317	11.987
13	77.909	12.4
14	78.909	12.559
15	82.177	13.079
16	86.56	13.776
17	90.501	14.404
18	94.33	15.013
19	98.412	15.663
20	99.614	15.854

Table 1 - Natural frequencies of the structure with isolators

E F F E C T I V E M A S S

MODE	X-COMPONENT	Y-COMPONENT	Z-COMPONENT	X-ROTATION	Y-ROTATION	Z-ROTATION
1	7.89E+07	2.17E+06	0.11869	6.02E+06	2.20E+08	6.27E+08
2	2.17E+06	7.89E+07	3.6351	2.23E+08	5.80E+06	4.50E+06
3	4777.3	7081.9	1.61E-02	2.00E+05	4.97E+07	2.53E+10
4	11376	30.191	862.26	4.56E+07	1.92E+10	9912.5
5	12.637	7893	2.04E+05	2.06E+10	4.39E+07	1171
6	1.1675	497.46	7.31E+05	2.07E+09	3.43E+06	40.246
7	324.13	1.0571	5942.9	6.12E+06	1.42E+09	2804.9
8	0.24423	19.225	6.05E+07	9.40E+08	4.88E+05	378.53
9	2.96E-02	1.2283	2.46E+05	3.52E+06	47675	34.088
10	4.7856	0.37543	40732	1.71E+05	1.72E+08	0.64126
11	3.07E-02	45.741	2.94E+06	2.92E+07	2.41E+06	1205.2
12	188.67	60.166	703.98	2.53E+06	7.40E+06	3723.8
13	20.053	164.49	1.48E+05	5.45E+06	1.08E+06	2417.7
14	8.5304	203.01	26541	1.22E+06	1.40E+05	60.616
15	288.49	3.7881	3126.7	2.55E+07	7.89E+06	61713
16	47.644	0.1291	1074.7	1.07E+07	2.10E+05	2.92E+05
17	2.8018	92.522	2.03E+05	6.46E+07	1.88E+07	8907.5
18	3.53E-02	0.11947	1.47E+06	5.09E+08	3.37E+06	339.79
19	6.68E-02	1.9574	1.74E+06	1.63E+09	2.02E+08	667.68
20	0.37473	0.58074	1.52E+06	3.56E+08	6.61E+08	30.551
TOTAL	8.11E+07	8.11E+07	7.43E+07	2.73E+10	2.22E+10	2.59E+10

Table 2 - Masses on each mode, structure with isolators



Numerical results

The same time histories as in the document ACS – P9LU – 001 were again applied to the structure equipped with the isolators.

Three time histories were applied contemporary with a PGA = 0.3g in the two horizontal directions (X and Y) and with a PGA = 0.2g in the vertical direction (Z).

The results are reported in the figures below.

In figure 2 and 3 the displacement of a point on the roof, a point on the vessel and a point just above the isolation system are shown. It is evident that they move all together like a rigid body. In Z direction (figure 4) the isolation system hasn't any effect, but due to the high stiffness in vertical direction there is no significant amplification of the ground acceleration.

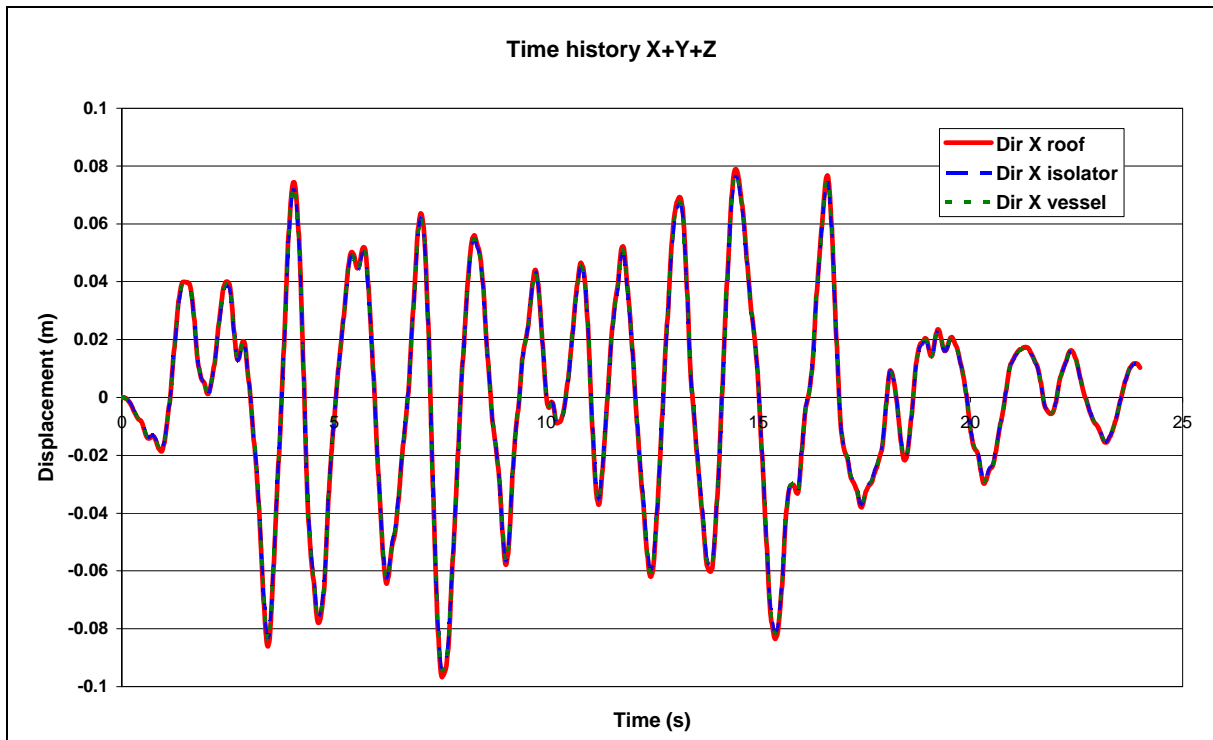


Figure 2 – Horizontal displacement X

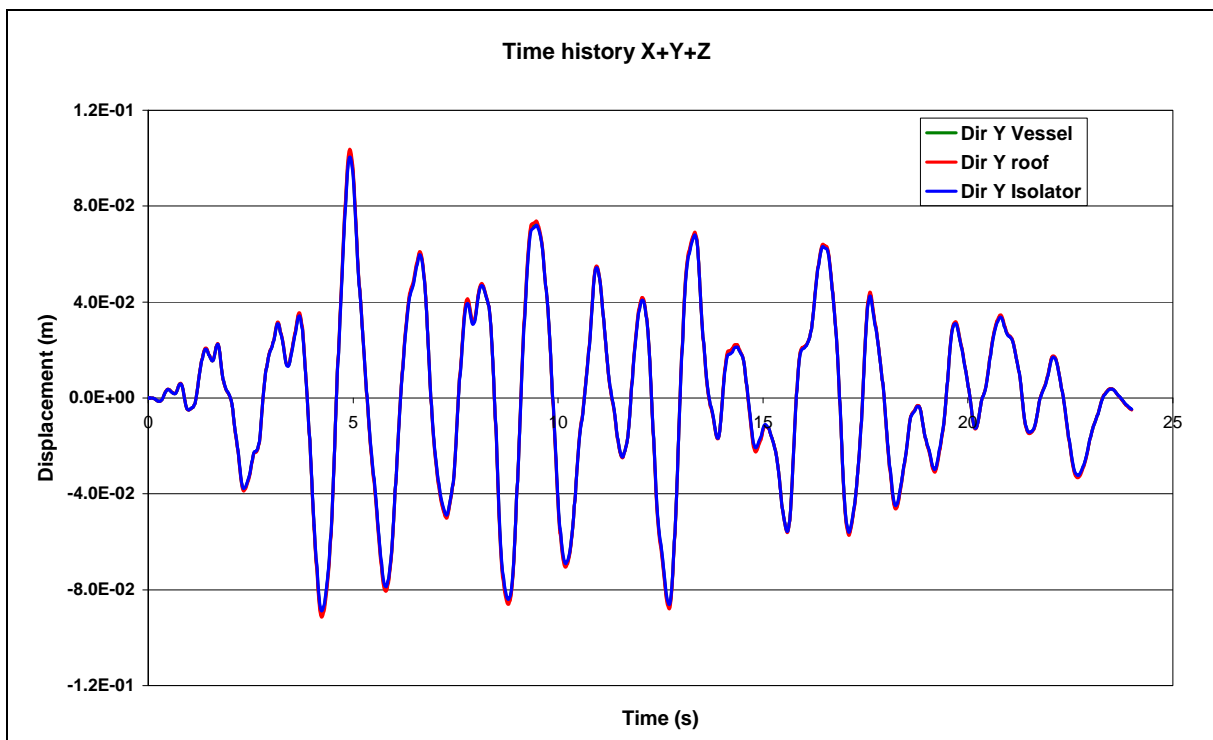
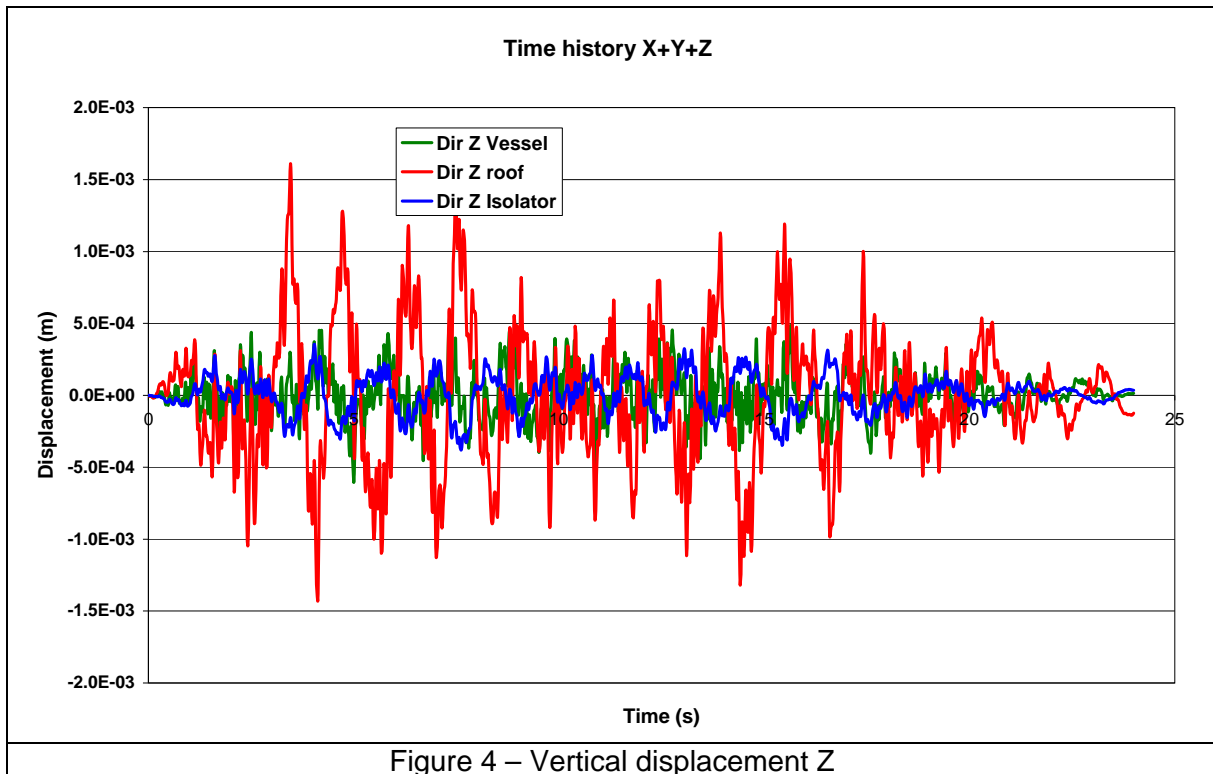
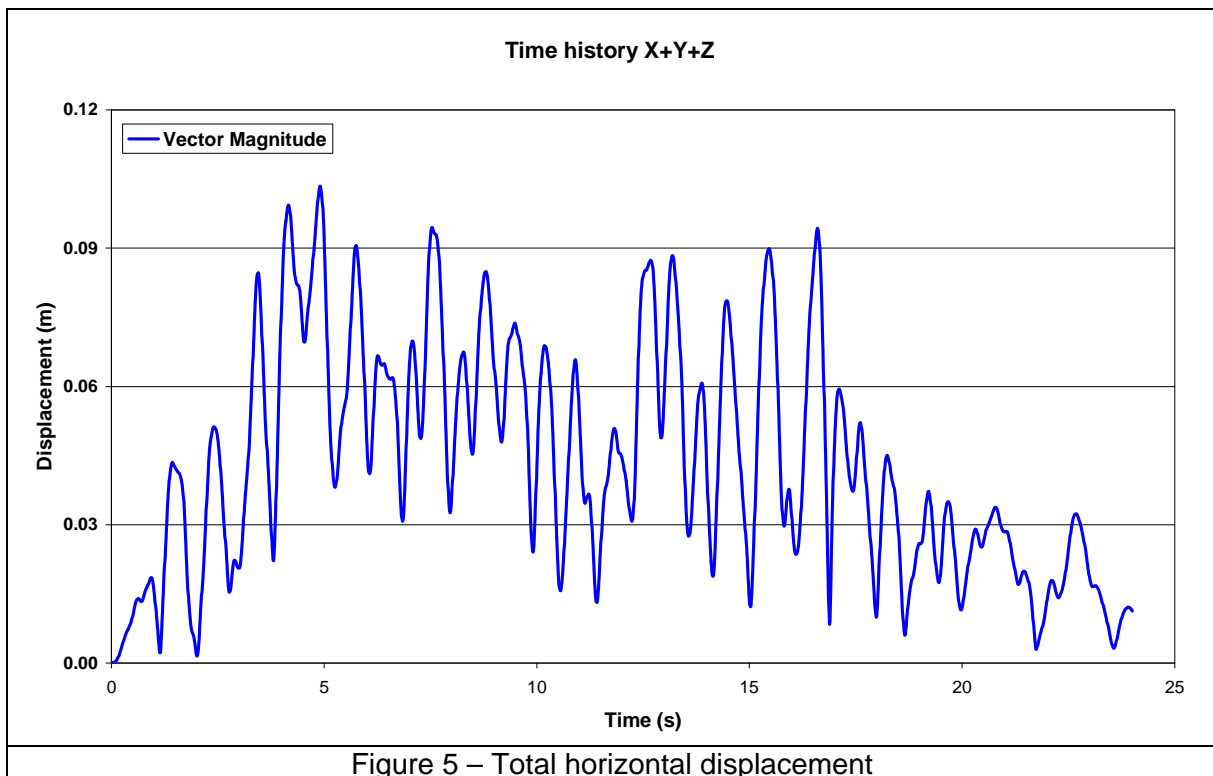


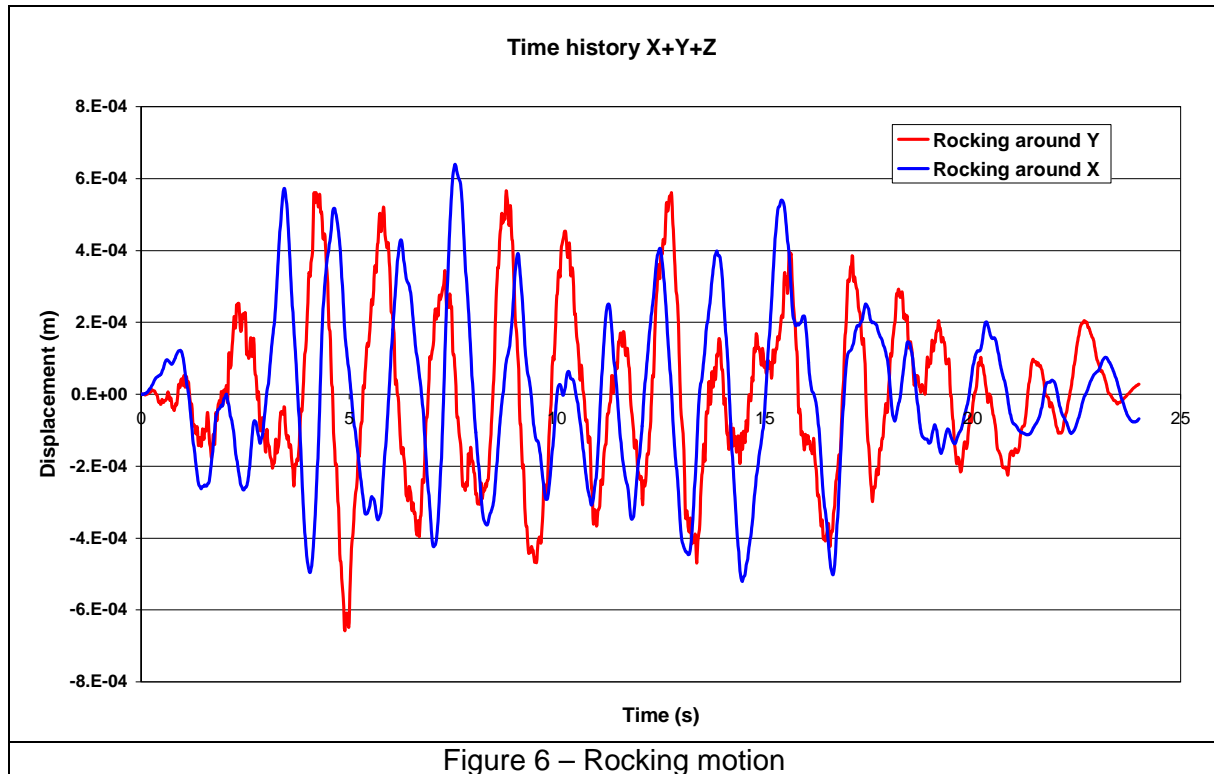
Figure 3 – Horizontal displacement Y



The total horizontal displacement is obtained as the magnitude of the vector U_x, U_y . The result is shown in the picture 5 below. We can see that the maximum displacement is around 100mm as in the previous configuration with 120 isolators.



The rocking motion of the building is very small: about 1mm. In the Figure 6 below it is shown the differential displacement at opposite points on the external perimeter of the building, along the two axis (point 450-67 and 417-287, Figure 21 document ACS – P9LU – 001).



In figure 7, 8 and 9 the acceleration of a point on the roof , a point on the vessel and a point just above the isolation system is shown in the two horizontal directions X, Y and in the vertical direction Z. It is evident that the results are practically coincident with the ones obtained with the previous configuration. This underlines that the dynamic behaviour of the structure can be evaluated just seeing at the global stiffness of the isolation system, leaving the choice of the number type and layout of the isolators to an economical optimization.

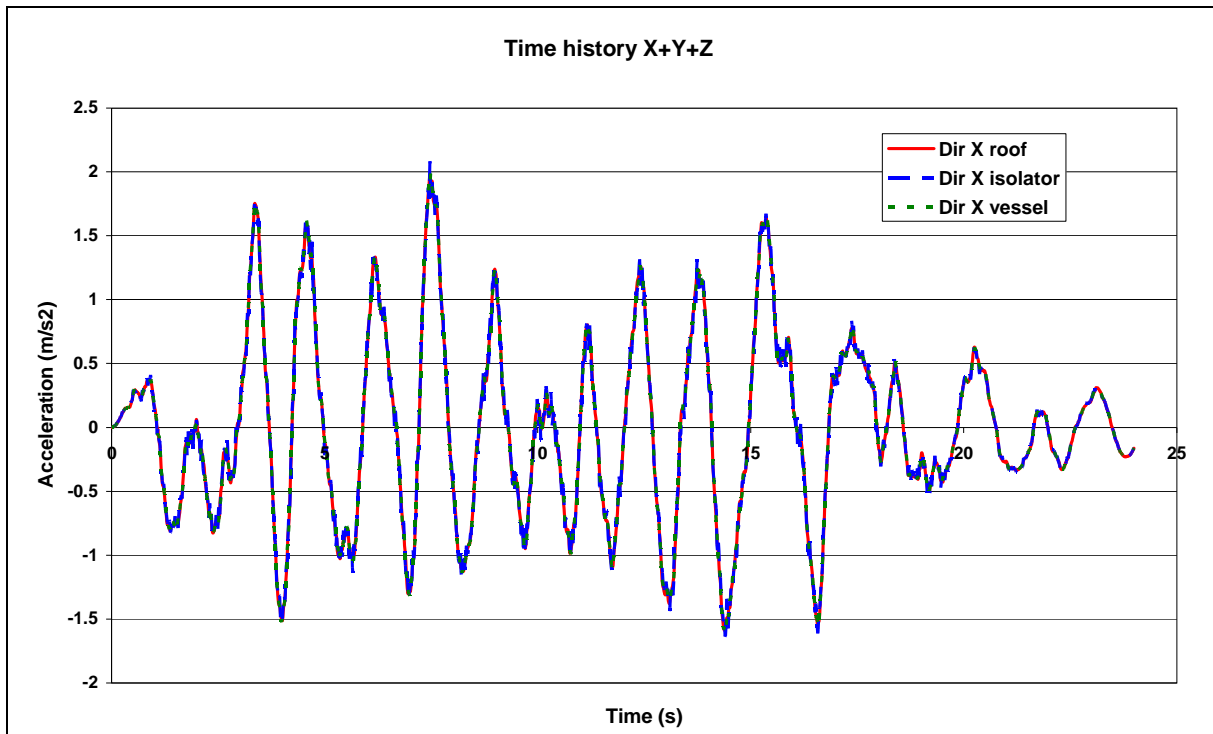


Figure 7 – Horizontal acceleration X

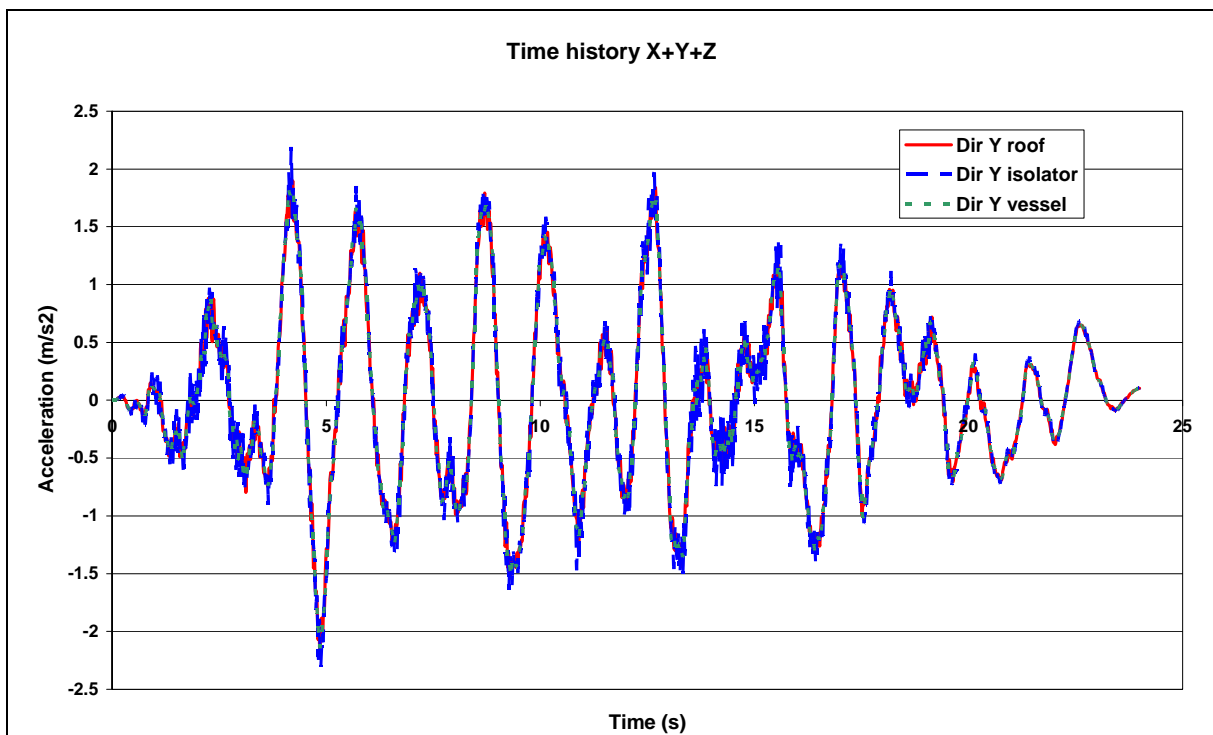
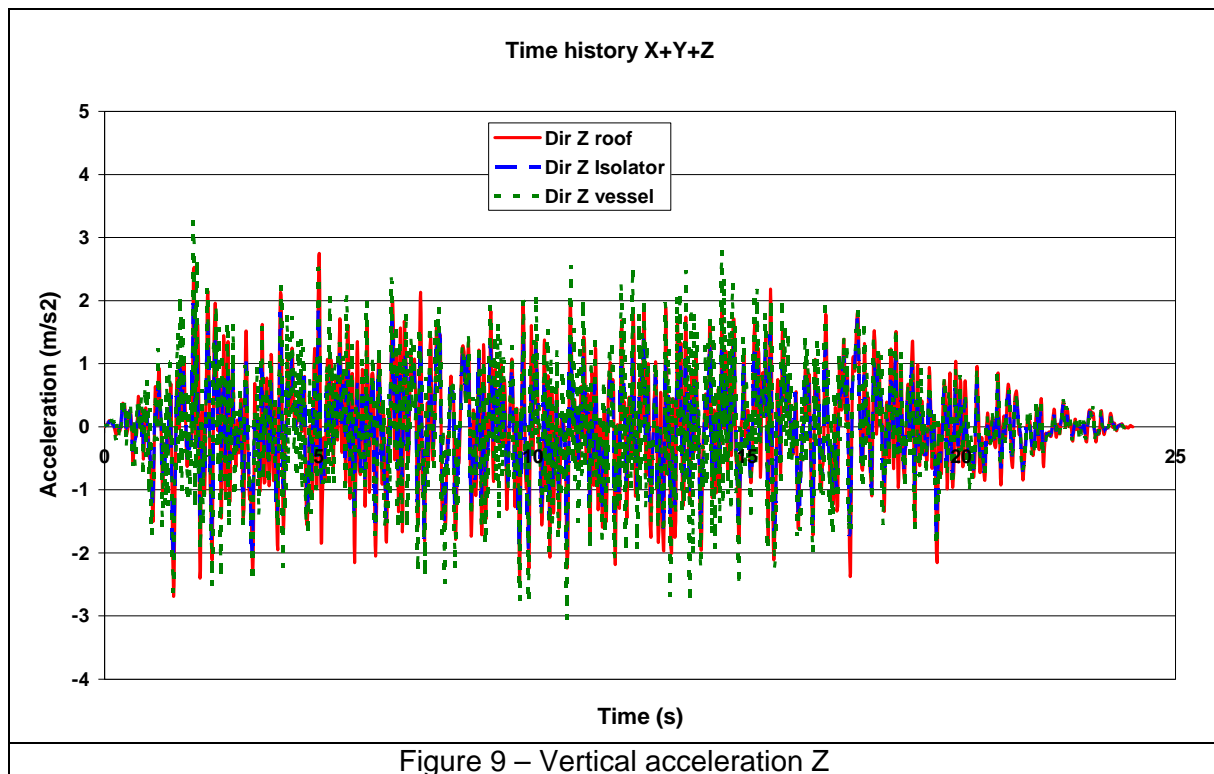


Figure 8 – Horizontal acceleration Y



For what concern the vertical load, combining the dead weight, the vertical load due to the horizontal acceleration (rocking movement) and the vertical load due to the vertical acceleration we obtain a maximum value of 18200 kN. The minimum value is 426 kN, thus no one of the isolators is in tension during the earthquake.

New isolator model

The usual linear model implemented to reproduce the behaviour of the isolator cannot be considered valid when the displacement is over than about 200% shear strain. This implies that a nonlinear model for the isolator must be implemented in the code; the consequence is that the modal analysis method must be abandoned and a step by step dynamic analysis must be used. This means a large increasing in computing time, being the nonlinear analysis much more time consuming that the linear ones.

The new model implemented in the code is based on a nonlinear spring coupled, in parallel with a nonlinear dashpot.

The characteristic of the spring and the dashpot are shown in the tables below and are extrapolated from the data collected during the test.

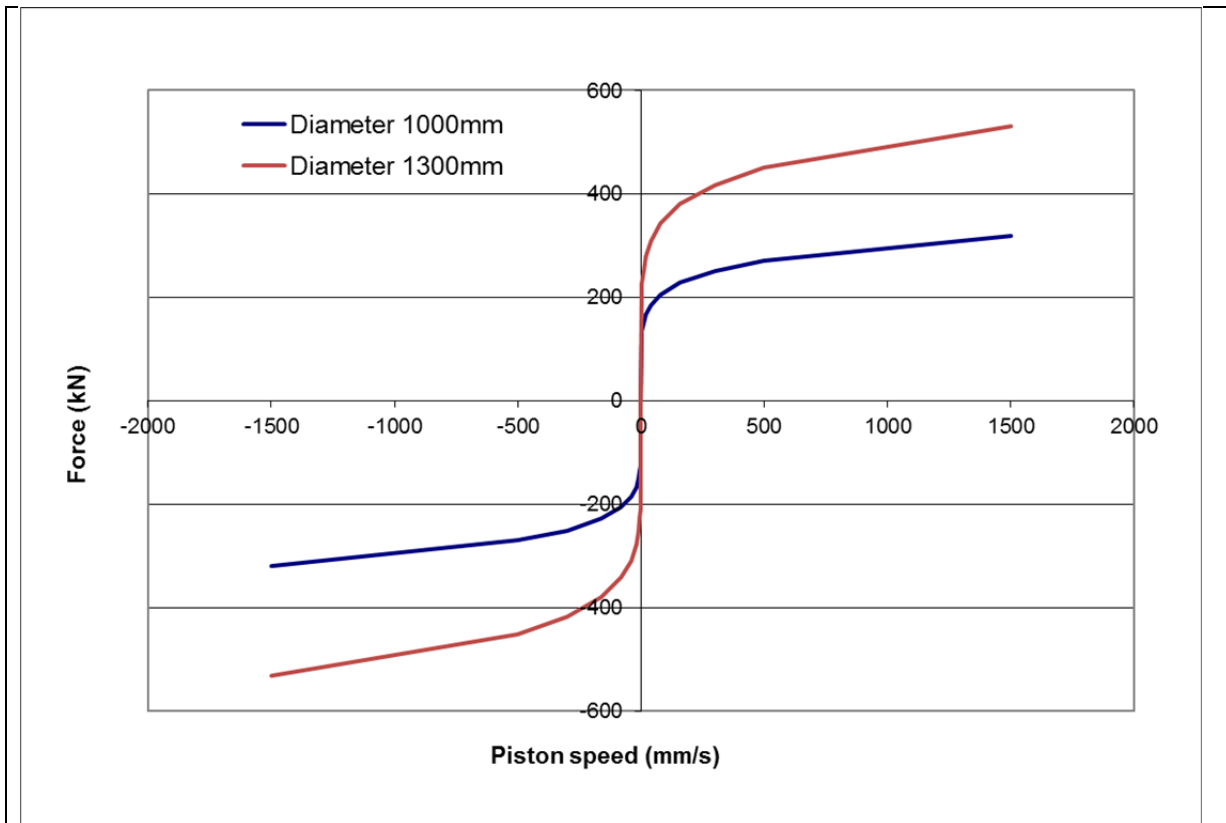


Figure 10 – Dashpot characteristic

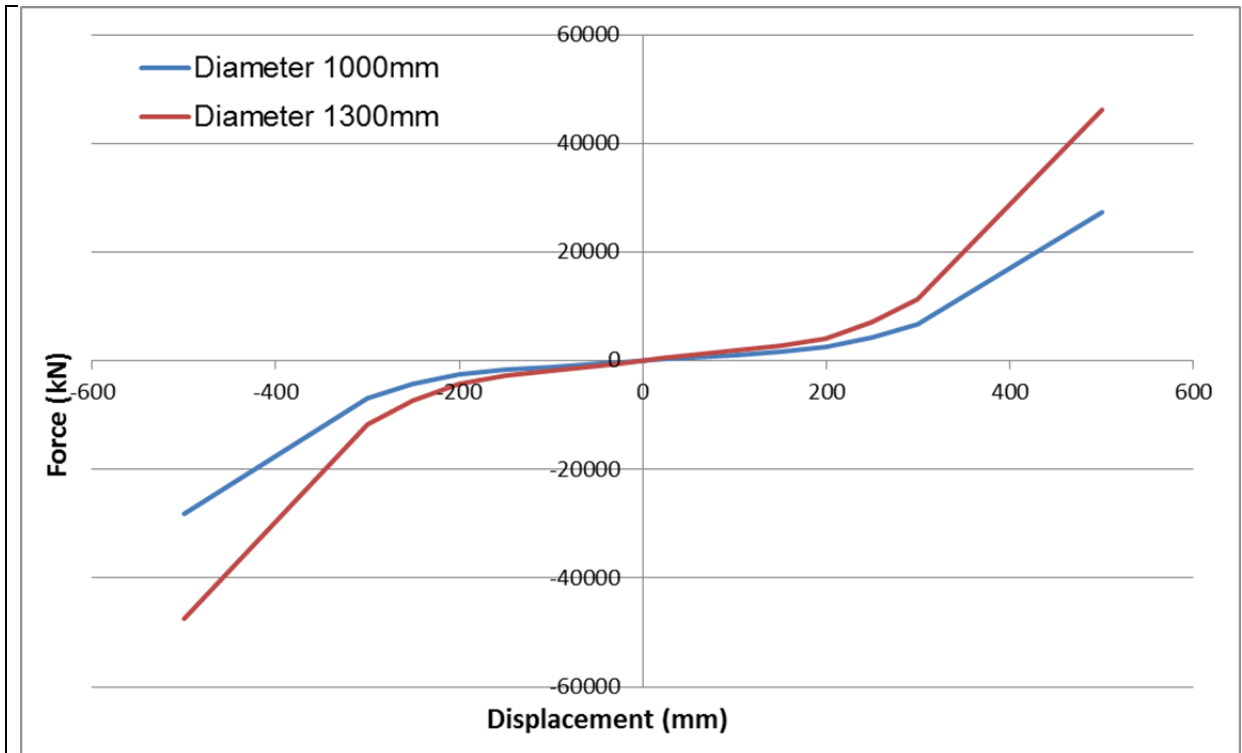
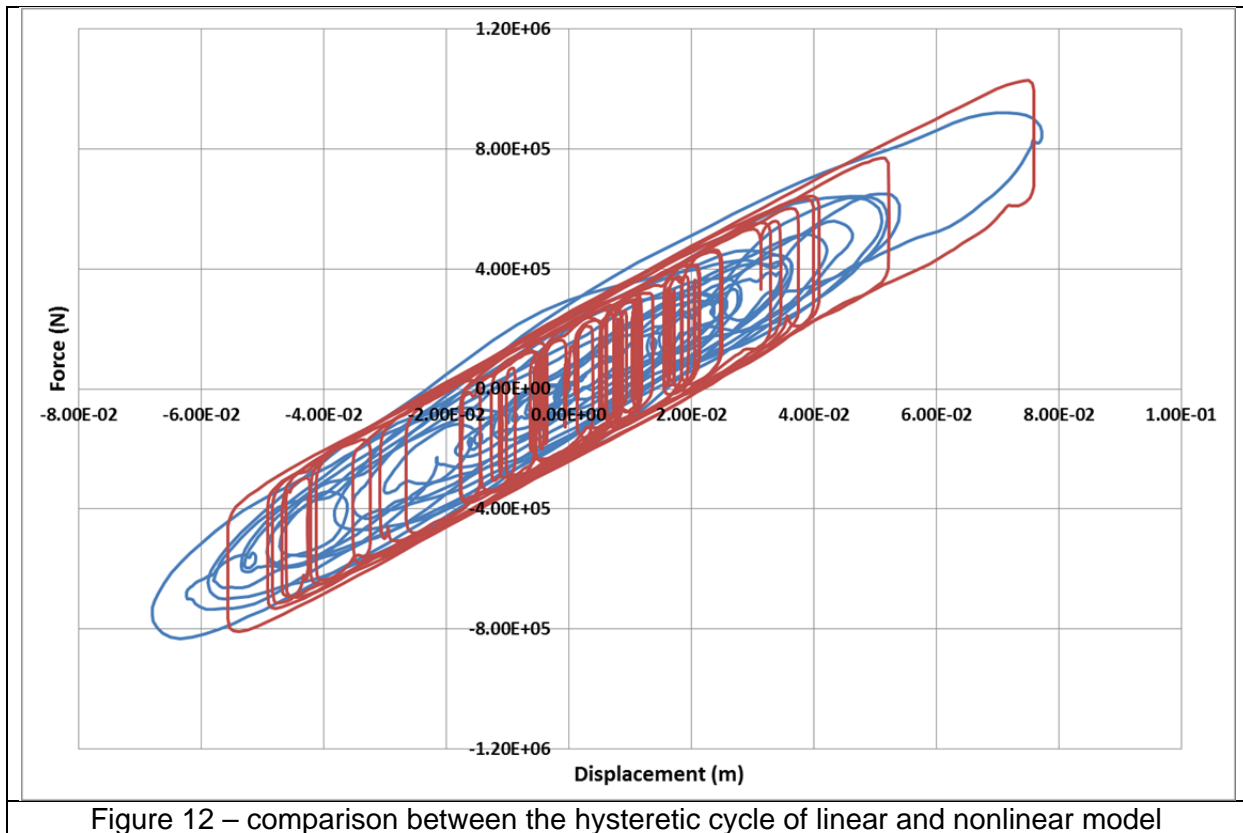


Figure 11 – Spring characteristic

With these characteristics the analysis with a PGA=0.3 was repeated to check if, in the range up to 100% shear strain (100mm), the results are similar to the linear model. In the tables below the hysteretic cycles, linear and nonlinear are compared.



The results are in good agreement, so the nonlinear model can be used in the parametric analysis.

Analysis

A parametric analysis was performed, keeping the same time history used in [1], but scaling the PGA until the value for the displacement was reached.

As limit value for the isolator displacement it was taken the vector magnitude of the displacement vector across the isolator itself. In other words, being U_1 and U_2 the horizontal displacement components, the value $\sqrt{(U_1^2 + U_2^2)}$.

In figure below the results obtained with a PGA = 1g are shown. It is clear that this PGA is the limit value that the isolation system can accept without any damage. It's worth noting that this value is very high also thinking to the earthquake that happens in the most seismic areas in the world.

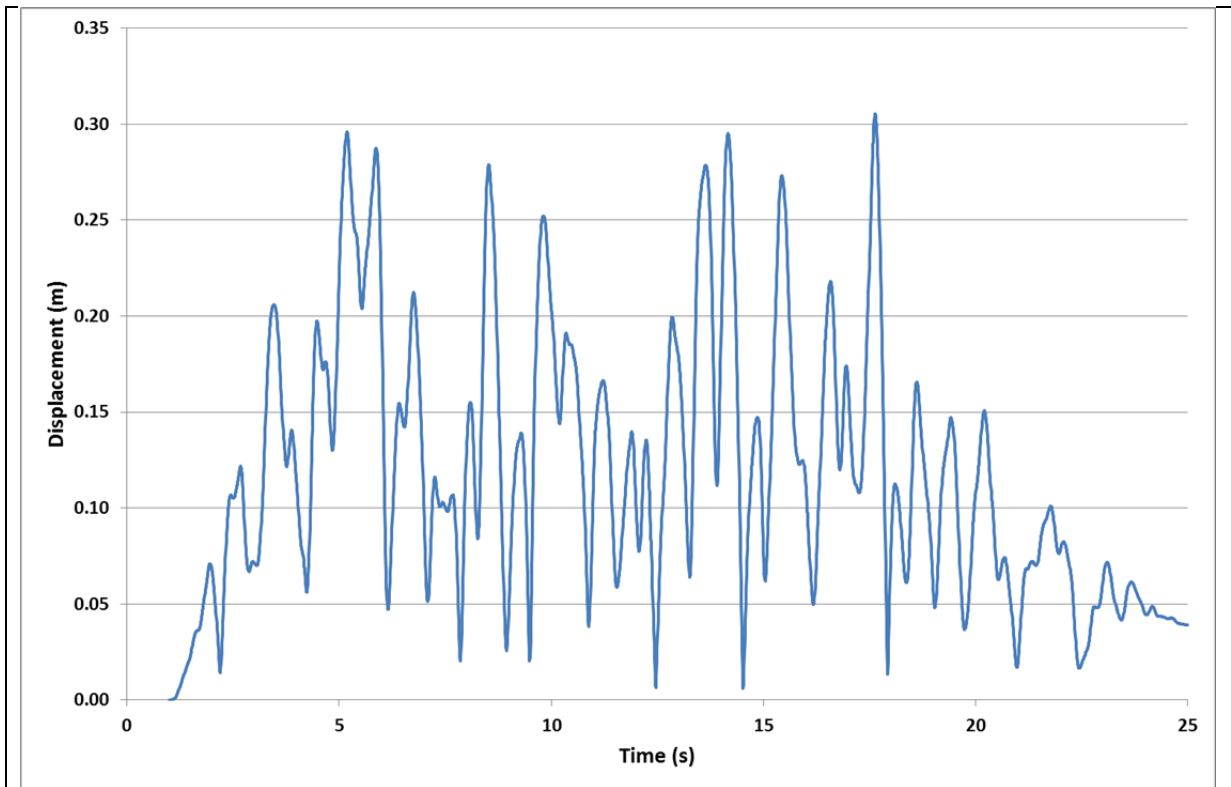


Figure 13 – Displacement vector magnitude in casa PGA = 1g

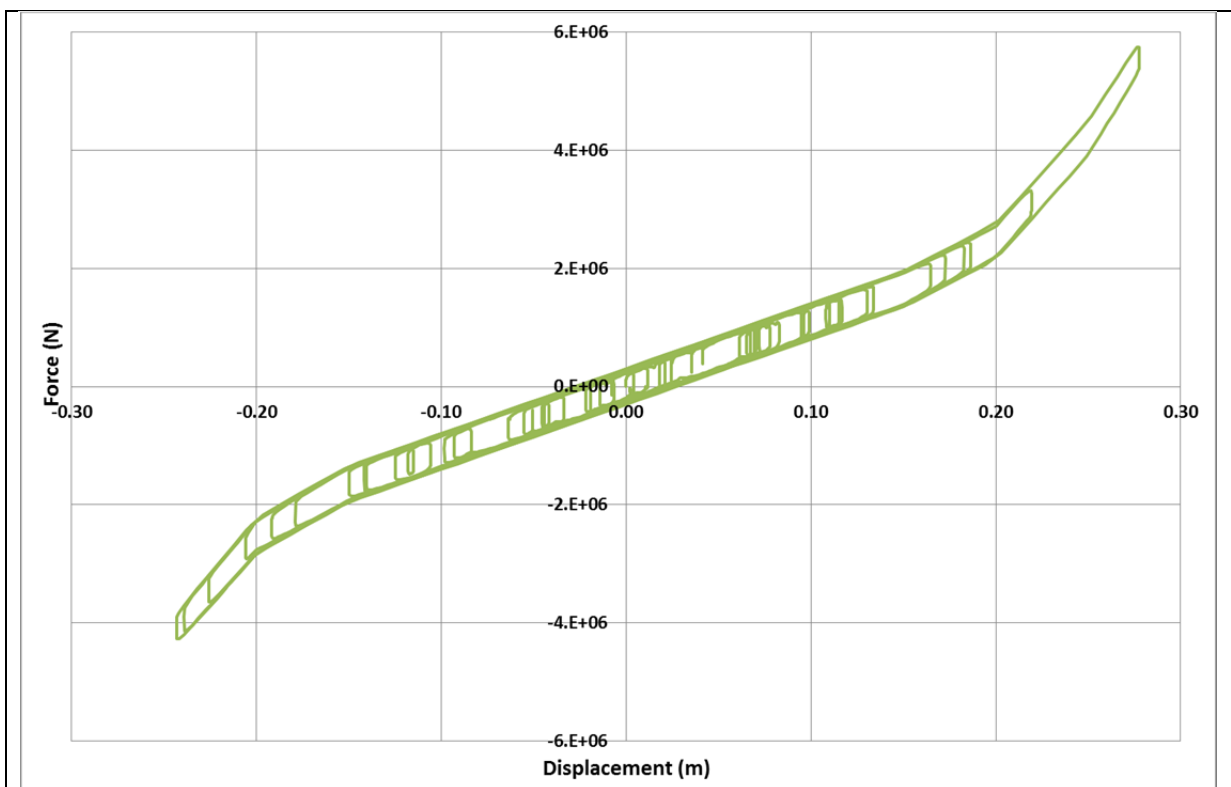



Figure 14 – Isolator hysteretic cycle – nonlinear model

 Centro Ricerche Bologna	Sigla di identificazione	Rev.	Distrib.	Pag.	di
	ACS – P9LU - 001	0	R	16	16

References

- [1] A. Poggianti: **“Preliminary design of the seismic isolation system for the nuclear power plant IRIS”** doc. ENEA ACS-PLU-001, rev.0, 24/09/2008
- [2] Test report CESI B0020266 – Doc ENEA XCESI – LP2 – 001
- [3] Test report FIP Industriale VP 59/10 – Doc ENEA XFIP – LP2 – 001
- [4] ABAQUS UNIFIED FEA, SIMULIA, 166 Valley Street, Providence, RI 02909 USA,
www.simulia.com