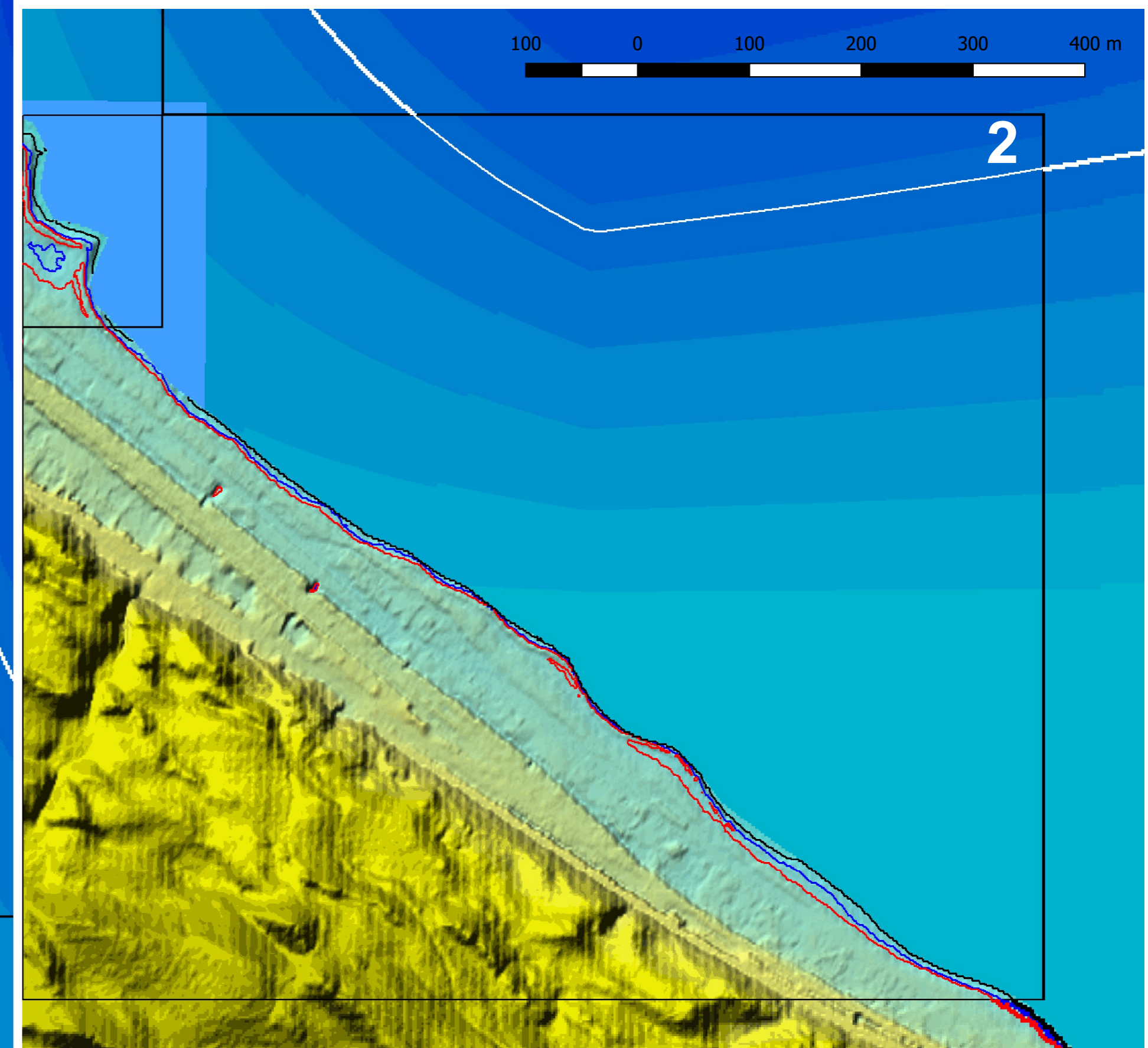
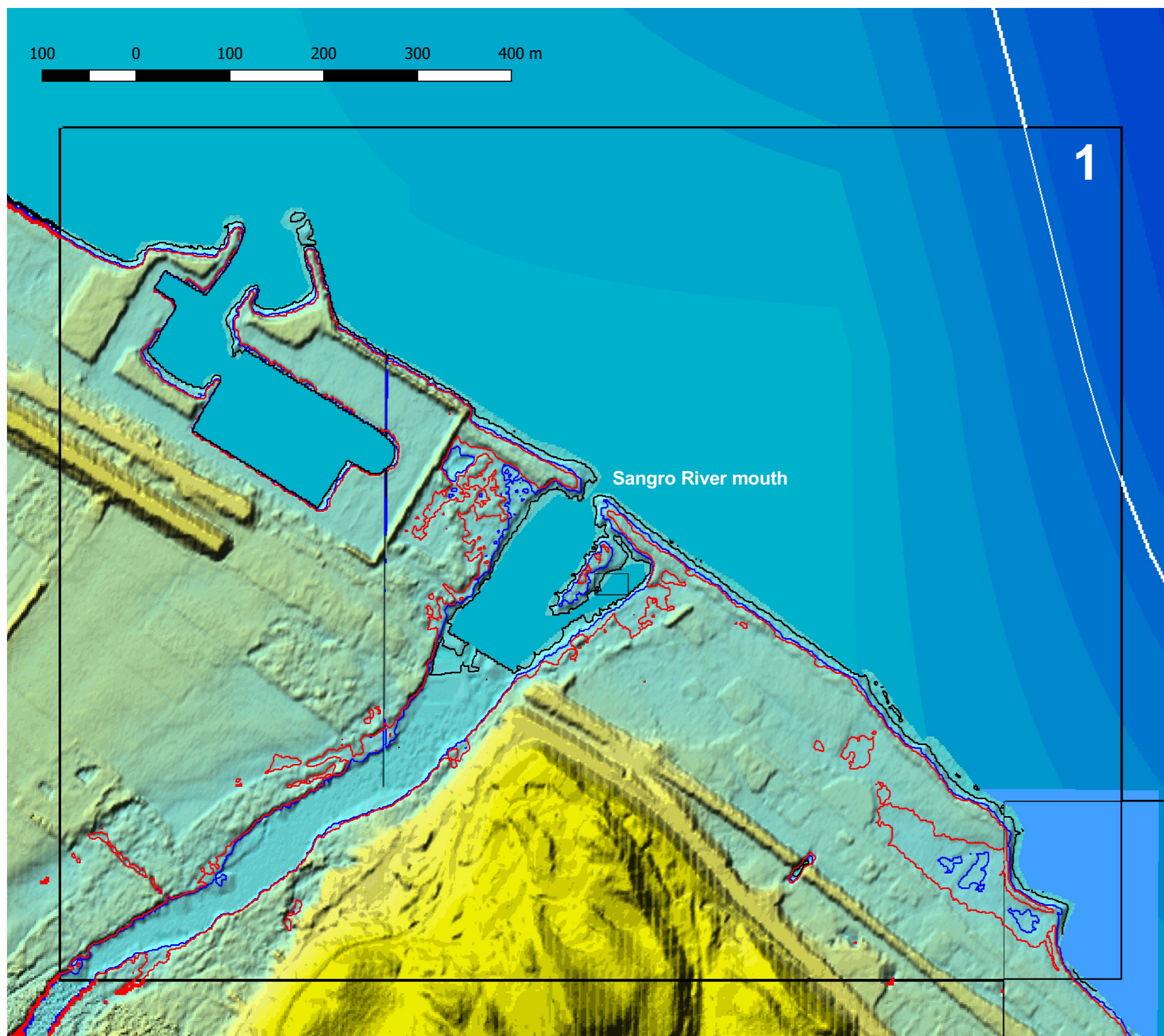
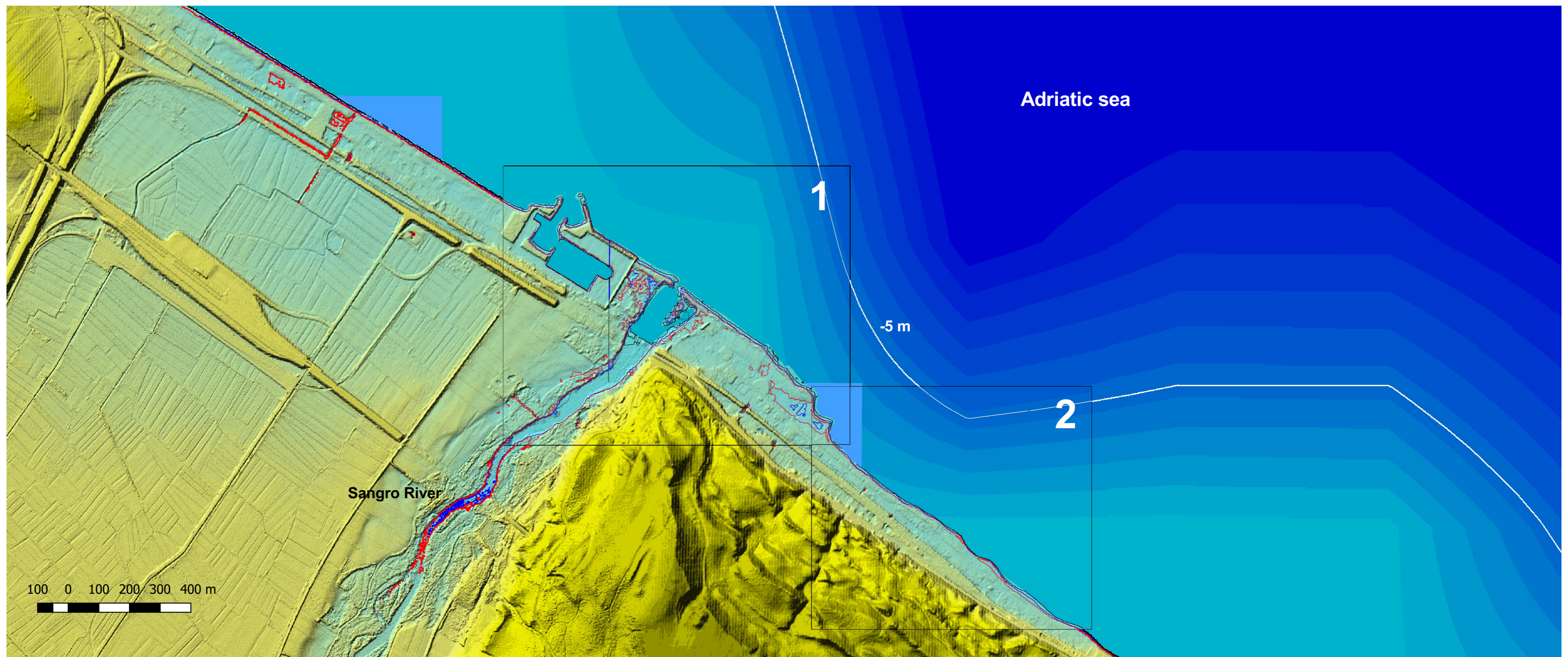
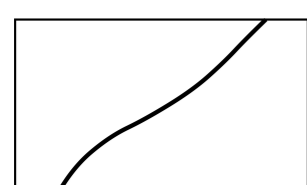


Fabrizio Antonioli - Enea Casaccia, Laboratorio di Modellistica e Impatti  
 Giovanni De Falco - Istituto per l'Ambiente Marino Costiero CNR, Oristano

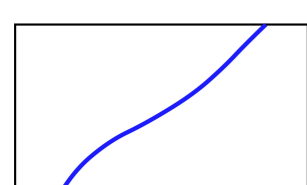


### CHARCTERISTICS OF DTM

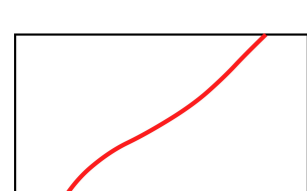
The digital terrain model of the emerged sector derives by LIDAR althimetry with a cell size 2x2 m (year 2008). Data were obtained by MINISTERO DELL'AMBIENTE E DELLA TUTELA DEL TERRITORIO E DEL MARE (MATTM) and distributed under Creative Commons Licence .



Elevation isoline 0 m.a.s.l.



PROJECTION IPCC 2013



PROJECTION Rahmstorf 2007

### RITMARE National Flagship Project

Coastal Vulnerability to Erosion and Relative Sea level rise in climate change scenarios

